

Webster Scale Employee Newsletter



August 2023

Volume 7 Issue 5

Calendar

School Start Dates:

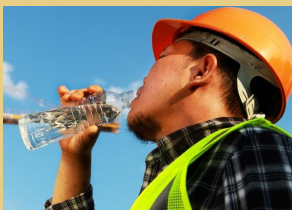
LATC - Aug. 21
SDSU - Aug. 21
Webster Area - Aug. 22
Langford - Aug. 23
Waubay - Aug. 23

Inside this issue

- Employee News
- Drafting Department
- Bristol Scale Installed
- Scale Service Work
- Shop Repairs & Manufacturing
- Equipment Operators
- Construction Projects
- Sleep Health

OSHA Workplace Safety Reminder

Hydrate before,
during and after
working in the heat.



Employee Spotlight: Tom Knutson, Equipment Operator

It takes many employees to run the wide variety of equipment needed on construction projects. Tom is one of the Webster Scale equipment operators, and he shares some thoughts about his work running equipment.

A typical day is pretty easy going, if you are prepared for it. A good day is making progress on the job and if you have air conditioning when running a machine. A bad day is not having air conditioning, or if the weather decides to be terrible. The easiest part of the job is knowing what you are doing. The challenging part is not knowing.

This year I've been working in New Effington, Jamestown, Eden, Elm Lake and now the Brown County job. I've mostly been running a scraper all summer. I drove a water truck for a little while, but my favorite machine is the scraper.

This is my sixth year running equipment. I had no previous job experience or training before starting at Webster Scale, other than driving tractors on the farm. I wanted to try to run equipment. My advice to give someone interested in operating equipment would be to not rush. Go slow and take your time to learn.

I am also able to travel, which I like doing. Eating out is nice and all, but it gets pretty spendy. Motel life is mostly quiet and peaceful.

I attended school in Webster and graduated in 2018. My parents are Amy and the late Darwin Knutson. I have an older brother and sister, making me the youngest. When I am not working, I like to hunt and fish, or do whatever else.

Project Manager Tim Woods made these comments about Tom

Tommy is doing really good. He had to move into a GPS scraper late last year and he had to learn how to run it basically all on his own. It is nice to be able to tell someone to go do something, with little explanation, and they just get it and go do it.

Scrapers 101: A scraper is a very large piece of equipment used in mining, construction, agriculture and other earth moving applications.

There are two parts to a scraper, and each part has an engine: a front tractor engine and a rear scraper engine. Webster Scale has three CAT scrapers. Other scraper operators this season for WSI are Baxter Sand and Zach Williams.



Special Needs Fund

Thank You

My family and I would like to thank the Special Needs Fund Committee for the gift that we received after the passing of my grandpa.

Eric Olson & family

In case you didn't know...

Clark Dental wants to remind Webster Scale employees with dental insurance that you are responsible to pay for your dental visits at the time of your visit.

AFLAC will reimburse YOU after you submit your claim to them.



Huck will be starting Pre-K at Webster Area this month.

Congratulations Faith and Wyatt!



*She said
"YES!"*

WSI Project Manager Faith Shoemaker is now officially engaged to Wyatt Ewing! She accepted Wyatt's proposal and ring on July 9th.

Faith and Wyatt met while attending college at South Dakota State University, where they both graduated in 2021.

Planning has begun for a 2024 wedding.

Faith is the oldest grandchild of company owner Roger Shoemaker, and the daughter of Angela Shoemaker and the late John Shoemaker.



Angela took this photo at the office when he brought her some paperwork. He was dressed for working with his dad Joel - orange safety vest, boots and a hat!



Behind the scenes with the Drafting Department

As Parts Manager, as well as a draftsman, Ken spends much of his office time handling the never ending need for parts. He works closely with Roger and the shop crews to get the needed parts as soon as possible. He first needs a clear understanding of what is needed, what it is called and a description. Then he searches to find a vendor. It is not unusual for Ken to spend considerable time on the phone checking prices and availability. This has become more difficult as some parts are hard to find, especially for the older equipment.

Ken still does some scale drawings, usually making small adjustments to original designs as needed. His son Tannor has taken over much of the drafting work since he came to work for Webster Scale after graduating from Western Dakota Tech in Rapid City in 2018.

Tannor works on a wide range of drafting projects and enjoys the diversity of projects. He works mostly with 3D drawings and has updated old 2D drawings to 3D. Tannor was asked recently to design a horse arena and a bin site (non-scale related) because his talents are known locally. To do this, he used GPS equipment, along with a drone, to create a 3D model of the existing terrain that is used as a reference when designing the finished grade.

Tannor also continues to make the large Webster Scale 'stickers' as they are needed. Recently he made a batch of thirty that Roger had requested. A vinyl cutter was purchased two years ago. The computer program that came with the machine lets him design the labels and then the machine cuts the letters. Tannor then follows up with a little manual trimming work to prepare the labels for mounting. When you see 'Webster Scale' on a piece of equipment, it most likely was created by Tannor.



Rob Kading, Scale Manager

The Shop 2 crew built this 120' x 12' scale in May, the scale crew began the installation in June (photos were in the July newsletter), and in July the installation was completed for Agtegra in nearby Bristol. This project included some unusual work for the concrete crew (DJ, Mason, Chris, Corey, and Ray). They also poured a sidewalk and the steps up to the door. This installation also included a grain probe.

It takes 28 days for the concrete to cure before the scale can be put into service, which should be some time in August.

The next scale installation begins the first week in August in DeGraff, MN. This one is an 80' x 12' scale for Glacial Plains Coop.



The **grain probe** is used to test the moisture content of the grain load as it comes across the scale. Not all scale installations include a grain probe.

Scale Service work

Service work is an important part of taking care of scale customers. Jamie provided this following example of the service work performed during the month of July.

The month of July started with the scale install for Agtegra in Bristol before hitting the road for service work.

July 11th started the three day trip for the scheduled 3-month scale checks at Valero ethanol plant sites. First it is 4 hours to Hartley, IA, then 3 hours to Charles City, IA, then 3.5 hours on to Welcome, MN, and then the 4-hour drive home. In each location the crew tests two truck scales, a rail scale, bulk weigher, grading scale and an auto kicker scale. They tested these same scales at Valero in Aurora, SD on July 21st, and also replaced broken bearing bolts in a truck scale.

Next, July 17th to Lakeside Dairy and Northern Sky Dairy near Waubay to hook up communication lines on their indicators so that they can connect to their new weighing program.

WSI Pit Scale
120' x 12'

#2309



July 18-19 found the crew of Jamie, Joey and Trent at Agtegra in McLaughlin, SD to rebuild a 120 foot WSI scale with new shackles and bearings, and then testing and adjusting the scale.

July 20th was the monthly testing for AGP in Dawson, MN where three truck scales, one rail scale and two bulk weighers are tested, followed on the 24th with similar testing for two AGP sites in Aberdeen.

Testing was completed at CHS in Watertown on July 25th for a belt scale, a 4 x 4 scale, a bench scale and a bulk weigher.

The last week of July, the crew drove two hours to Loiseau Construction to work on their WSI portable scale. A load cell, wiring and several broken and missing bolts were replaced. They had to lift and relevel the scale. This was three days of 100+ degrees outside for Jamie and Trent!

Repairing and Manufacturing



Jason is shown using a camera device that allows him to see into places on equipment that are not readily visible. In this case, he is observing wires in the 143H blade that is in Shop 1. New wires are needed in the transmission. He also found four dead mice in this blade. Jason noted that his record so far is seven mice found in one piece of equipment!

Shop 1

Shop 1 is full with not only this blade, but also three big trucks—#10, #36 and #38; Stacey is currently working on #38, the scale truck. Several issues are being addressed—the overflow is blowing water out, there are cracks in the sleeve and block, and issues with the head and head gasket.

Semi truck #36 has emission problems so is in the shop. Fourteen of the semis in the fleet have CAT engines. Stacey noted that CAT engines are not available now, which can be an issue for getting parts. The newer trucks, #10, #40, #44 and #46 have Cummins engines.

Semi #10 is still waiting to have updates added before it is ready for service.



Ethen's black work shoes have turned red this summer!

Shop 2

The Shop 2 crew is focused on building scales. Two 80-foot pit scales have been completed and are stacked outside on the north side of the shop. Currently the crew is building a 70-foot portable scale that needs to be completed in August.

JD and Buck have three high school students helping out in the shop this summer. Karter is a recent addition, and has been cleaning and painting. Trace has been helping with building scale parts, and Ethen is painting parts with the dark red paint. Karter and Trace will both be Juniors this fall, and Ethen, a Sophomore.

Bottom right: Buck is shown welding on scale parts on a hot 88 degree day, wearing a sweatshirt! He needs to wear a hooded sweatshirt and helmet for protection while welding.

Karter & Trace in Shop 2



70-foot long beam for a portable scale



This month we recognize our large equipment operators. It takes a lot of employees to operate all the different types of equipment during the busy construction season.. From the largest equipment like scrapers and milling machines, to the smaller ones like skid steers and brooms, each one plays an important role.



CADE SHOEMAKER



DAWSON MATHISON



ELIZABETH OLSON



ERIC OLSON



JAKE STAVICK



JAMES HOHN



JASMINE GREEN



KELLY ZAVADIL



LUCAS LESSERT



OWEN MCGREGOR



TOM KNUTSON



ZACH WILLIAMS

College Student Equipment Operators this summer...

Baxter Sand Mac Young
Jake Case Jared Storms
Zachary Neu

Running big equipment has been very exciting for me since I've been with Webster Scale. I remember as a kid playing with my Tonka toys in the dirt. Fast forward, and now they're life sized. I've ran about every piece of machinery the company has, but scraper has always been my favorite.

Tom Knutson



Construction Division

Faith Shoemaker, Project Manager

We went to the Kadoka area for a 30-mile shoulder job. We were there for two weeks completing the work. The trucks hauled millings onto the site and Eric with the blade placed the millings. Jared was in the broom, Zach watered the area and Elizabeth rolled it.

Jasmine was at the DOT yard breaking up the milling pile with the excavator and also loading the trucks as they came in. Zippy and Jonathon were also on and off-site fixing breakdowns, fueling, greasing and helping when we were short on people.

This was a very pretty area as we were right on the edge of the Badlands. We didn't see any exotic animals, but we were told there were several elk seen in the area where we were working just a few days before we got there.

Kadoka Area Highway Shoulder Work

#2314



#2301

Tripp County Highway 18 Shoulder Work



Faith Shoemaker, Project Manager

We went over to Winner after completing the Kadoka project and knocked out the shoulder work in ten days.

We milled twenty miles of shoulder in total, then prepped the shoulders behind the mill so that it was ready to be paved by BPI. We had to haul half of the material to Colome and the other half to the Winner DOT yard.

In this photo, Jonathon is training Zach how to run the ground controls on the mill, while Owen is on top running the mill and Dave is in the truck.

#2209

Webster School CTE Addition

Faith Shoemaker, Project Manager

Dawson worked at the school for a week with help from Cole and Roger when needed. Once we finished in Winner, we came back to help Dawson.

We are now working on grading everything around the new CTE addition. It is very tedious work as we have to work around a lot of other subcontractors which often changes. We are staying ahead of the concrete subcontractor with having the entrances, sidewalks, curb and gutter done. We are hoping to only have the parking lot areas left to grade after this week.



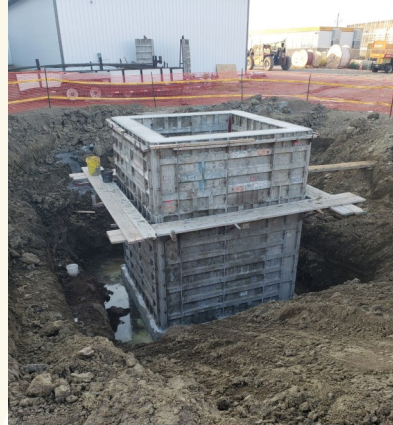
Construction Division

Donald Fellbaum, Project Manager

Some of my crew has been at the school working on that project and some are at Elm Lake helping Tim. Recently in July, Jared and I were at Job # 2216. We dug out a 14' x 14' hole thirteen feet deep for a vault of some kind. As soon as they get the vault concrete waterproofed, we will be back to fill it. We also put a catch basin four-feet under the gravel grade. Baxter and I went back to Jamestown later to get rid of a big clay stockpile. Currently our crew is back to the Century Builders project at Ellendale, # 2212.

#2216

Data Mine Site
Jamestown, ND



Middle photo above is the vault in the 13' deep hole. Photo on the far right is the catch basin where Jared is filling it with water.



YOUR DAILY WORKPLACE REMINDER:

1. Don't get hurt.
2. Don't break anything.
3. Watch out for each other.
4. Be productive.
5. Clean up and dispose of any garbage in your company property.



#2214

Elm Lake Access Rd.
Brown County

Tim Woods, Project Manager

We have just started laying pipe in Elm Lake and will get more help soon to lay all the pipe.

We have completed 99% of the dirt work. We also have been working at Ellendale and Jamestown off and on.



Tim's crew in Brown County has been Logan, Tucker, Zach, Cade, Tommy, Lucas and McCaffrey on the pipe work. Jake and James have been finishing slopes.



Sleep Health is a Safety Priority

It is common to have occasional sleepless nights, but if you often have difficulty falling asleep or staying asleep on a regular basis, you might have insomnia.

What causes Insomnia? It could be caused by...



- An overstimulating bedtime routine. For example, watching TV or using cell phones and tablets.
- Consuming alcohol or caffeine before bedtime.
- Taking over-the-counter or prescription medications that interfere with sleep.
- Having medical conditions like arthritis or asthma.
- Having psychological conditions like anxiety or depression.
- Not having a sleep-friendly environment, with a dark, cool, quiet bedroom.

Do you wake up tired?

You might have obstructive sleep apnea if you...

- Snore loudly and frequently
- Gasp for air or stop breathing while sleeping.
- Get up to urinate several times a night.
- Are sleepy or fatigued when you should be awake and energetic.
- Are overweight or obese.
- Have a family history of obstructive sleep apnea.

Everyone needs 7 - 9 hours of good-quality sleep every day to refresh the mind and body, to be able to work safely on the job.

If you struggle to get a good nights sleep, talk to your doctor.

nsc.org/fatigueatwork



- Family owned business since mid 1960's
- Full line of scale products, services and parts
- Wide variety of heavy construction services
- Committed to providing superior products and services at a reasonable cost

Webster Scale, Inc.
PO Box 127
14012 SD Highway 25
Webster, SD 57274

