

# Webster Scale Employee Newsletter



SEPTEMBER 2023

Volume 7 Issue 6

## Calendar

- **September 4th**  
**Labor Day Holiday**  
Webster Scale closed.  
Enjoy the last holiday of summer!



- **September 15th**  
Webster Homecoming
- **September 23rd**  
Webster German Fest
- **October 2nd**  
Waubay Homecoming
- **October 7th**  
Webster Pumpkin Fest

### What makes a great safety culture?

*When people continue to work safely and do the right thing..... even when no one is watching.*

## Work continues on local school building project

Site preparation work continues for the new Career & Technical Education addition to the Webster Area School. Webster Scale is the sub-contractor with JDH Construction from Aberdeen the prime contractor.

# #2209

Webster Scale starting working with this project a year ago, completing some building foundation work, installing storm sewer pipe, and excavating and backfilling the footings for the new addition. This season the new shop floors were regraded in preparation for the concrete floor to be poured, and this past month, some additional work was completed.



*Faith Shoemaker, Project Coordinator*

We have been working at the school getting it ready for school to start. We placed the west side addition with pea rock for the playground area, and have placed topsoil in the parking lot boulevards. Concrete is being poured as we grade the gravel work. Hopefully we will be finishing the main parking lot grade soon, and then Lien's will come to do the paving.

## Temporary workers hired for highway project

Tim Woods has five temporary workers hired for traffic control on project #2304 south of Freeman, SD on Highway 81.

The flaggers are Pat, Jessica, Harley and Ana, with Carlos driving the pilot car. They each play a very important role in directing traffic safely through the construction zone. Each one completed the required training for this work before being hired by Webster Scale.



These are skid marks from a previous truck that almost ran over Pat, the flagger!





## Who's Who

### Project Leaders



**ROB KADING**  
Scales



**TIM WOODS**  
Construction



**DONALD FELLBAUM**  
Construction



**FAITH SHOEMAKER**  
Construction

### Reminders from Angela

#### MOTELS

When leaving a motel room, it is YOUR responsibility to check out of the room! Let me know if you have any questions.

#### SCRAPER OPERATORS

Please make sure scraper sheets are getting turned in each week!

### OIL CHANGES

Minivans	3,000 miles
Pickups (gas)	3,000 miles
Pickups (diesel)	6,000 miles
Trucks (heavy haul)	10,000 miles
Fuel Trucks & Water Trucks	10,000 miles
All construction equipment	250 hours

*Keep up with your oil changes!*

### DAILY WORKPLACE REMINDER:

1. Don't get hurt.
2. Don't break anything.
3. Watch out for each other.
4. Be productive.
5. Clean up and dispose of any garbage in your company property at the end of EVERY day.

*Employee Handbook  
Company Property, Page 9*



On July 27th, Webster Scale employees working onsite were treated to lunch provided by another Webster business, Northland Auto, in appreciation of doing business with them.

Lunch items were ordered from Perebooms, delivered by Northland employees, and were very much appreciated!

*Thank you Northland!*



When the yard looks empty because the trucks are gone, that is a good sign our truckers are busy.

*Current update by Dave Goedert*

- Bob, Bronco, Ed, Owen, Shawn and Dave are hauling for the third week from the 'Leave it to Cleaver' pit to the Maple River Hutterite Colony. The colony is putting up three new bins, so the trucks are hauling sand. (*B & B Construction project*)
- Brett, Layne, Mike and Steve G. are hauling chips from Fishers in Milbank to Mina Lake west of Aberdeen. (*Bituminous Paving project*)
- Calvin and Terry are on Tim's job south of Freeman.
- Recently completed: Brett, Calvin, Layne and Steve G. were out west for four days hauling material from Creston to Highway 44. (*Bituminous Paving project*)



Rob Kading, Project Manager

In mid-August we began the installation process for a WSI pit scale in DeGraff, MN. The scale has been built in Shop 2, so is ready. We plan to install it the early part of September.



# #2317

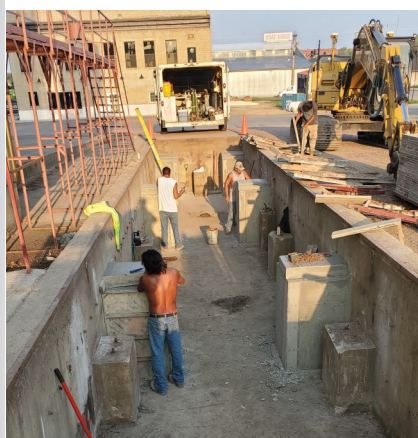
**80' x 12'**  
**WSI Pit Scale**



**Day 1**



**Day 2**



**Day 3**



# #2310

**70' x 10'**  
**Rice Lake Scale**

**Yaggies, Yankton, SD**

While the concrete was curing on the scale pit in Degraff, the scale crew installed a Rice Lake scale for Yaggie's in Yankton. It took our crew - DJ, Mason, Chris, Cory, Ray, Joey and myself just three days to complete this installation!

The first day we removed the old scale and washed down the scale pit, second day we poured concrete for the new piers, and the third day we set the scale in place. It takes six days for the special concrete that we use to cure, so we plan to put the scale into use on September 7th.

This was Joey's first trip to Rice Lake to pick up a scale, and he said it was a learning experience hauling such a big load through the Cities!

Scale service work continues with Jamie and Trent on the road most days. As harvest season approaches, there are scales that need to be serviced as well as certified.



# Behind the scenes with the shop crews

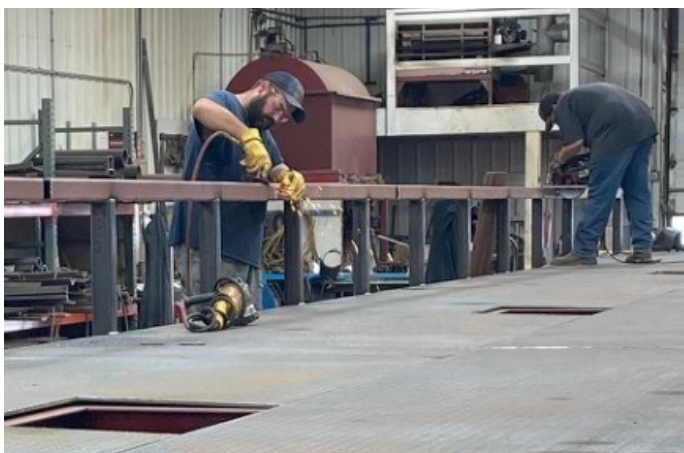


Shop 1 was full of other equipment needing work, so work on #30 Semi was taking place outside. Stacey and Jonathon were in the midst of a two-day project on the front differential housing. Jason had removed the tire the previous Saturday to get to the differential. Jonathon got to be the one underneath the truck bed, and Stacey got to direct from the top! They took out the differential and are in the process of replacing it.

## CURRENT PROJECTS - SHOP 1

1. Semi #36 - work on head, sleeve and piston; valve seat is loose. Waiting on parts.
2. Semi #24 - head gasket
3. Semi #30 - front differential housing, front leak
4. JD tractor - rebuild air conditioning
5. Broom - front brakes
6. 246D Skid Steer - DPF filter (2-day project), turbo, front left wheel seal

Jason is currently on-site in Ellendale working on problems with a skid steer, a wacker packer and a backhoe.



JD photo

JD, Buck and Joey in Shop 2 are currently in the final stages of finishing the 70' x 11' portable scale the one mentioned in the previous newsletter. It was to be completed by mid-August, but they had to wait for the deck sheets to show up, and that slowed everything down.

In the above photo, Joey and Buck are cutting openings in the railing directly above each deck seam, which allows for some movement between the deck sheets. To prepare the deck sheets for painting, the crew first uses wire wheels to clean up the deck. Next, the deck is sprayed with an acid, followed by a power washing. The deck needs to dry fast or the steel will rust, so they use an air compressor to dry the deck. Next comes a primer paint, and after it dries, the final coat of paint which is a shade of orange. The deck finishing is a process they complete all in one day.



## SATURDAY SHOP WORKERS

On a typical Saturday morning during construction season, you will often find JD and Jason working on something at the shop. On this particular Saturday, JD had several oil and filter changes on his 'to do' list. He said it can take up to 1.5 hours to complete an oil change on some equipment.

Jason was working to get to the differential on #30 Semi, so was in the process of removing the tire.

Behind the scenes almost every Saturday is the Boss, who also is working!





*Faith Shoemaker, Project Coordinator*

Our crew built up this old township road for GFP. Zach and Tommy were in the scrapers, Eric in the blade and excavator, and Jake ran the dozer. We built up a few spots through the sloughs and also put in three pipe.

# #2115



Be like Tommy and check your oil!

### Day County Courthouse - Webster

On the south side of the courthouse, we are building a parking lot that is handicap accessible. Eric and Dawson have been hauling out the topsoil and bringing gravel in. Eric has been placing the gravel using a dozer.



*Tim Woods, Project Manager*

We started south of Freeman, SD two weeks ago building a turn lane for I-29 off of Highway 81. Cade and Jake are in the dozers, Tommy is in the 627H scraper and Lucas is in the sheepsfoot.

# #2304





# SO YOU THINK YOU CAN MULTITASK?

Your brain can't process two things at once. It switches attention from one task to another.

96% of people think texting while driving is dangerous – yet **44%** do it.

Dangerous even when sitting at red lights or stop signs because it takes your brain some time to return its focus to the road.

Voice-to-text is not safer – it may distract you longer than texting.

Did I remember to feed the dog?

Send text to Aunt Lisa

No! Cancel!

Sending text to Amoré Pizza

**Nothing is more important than getting to your destination safely. Use your phone and other technology only when you are safely parked.**

**National Safety Council** [nsc.org/justdrive](http://nsc.org/justdrive)

## Positive side effects of NOT using a phone while driving:

- More likely to arrive safely at your destination.
- Feeling more relaxed; some of our best ideas and solutions come when we are at ease.
- Not letting your phone control you.
- Being able to have a conversation with your passengers.
- Avoiding crashes and their associated costs—missed time from work, doctor visits, auto repairs, court fees, etc.
- By setting this good example to others, you may help to keep your co-workers, friends and family safe.

**FACT:** Hands-free devices offer no safety benefits because they do not eliminate mental distraction. The brain cannot process two mentally complex tasks at once and, as it switches from a cell phone conversation to driving and back again, the brain becomes so overloaded that drivers can miss seeing up to 59% of their driving environment!

**REMINDER:** Webster Scale employees are NOT allowed to use their phones for any reason while driving a company vehicle. See complete cell phone policy in Employee Handbook, pages 9-10.



- Family owned business since mid 1960's
- Full line of scale products, services and parts
- Wide variety of heavy construction services
- Committed to providing superior products and services at a reasonable cost

Webster Scale, Inc.  
PO Box 127  
14012 SD Highway 25  
Webster, SD 57274

