

Webster Scale Employee Newsletter



NOVEMBER 2023

Volume 7 Issue 8

Calendar

- **November 5th**
Daylight Savings
Time ends
*Remember to
'Fall Back'*
- **November 11th**
Veterans Day
Thank our veterans
- **November 23rd**
Thanksgiving Day
*Webster Scale
closed*



*We are what we
repeatedly do.
Excellence then is not
an act, but a habit.*

Webster Scale participates in community event

Some energetic young people got together on Pumpkin Fest Saturday, October 7th, to make sure that Webster Scale had a float in the evening parade in Webster.

Last year a drop deck trailer was used for the float, but this year a portable scale deck was chosen as the base. With **WEBSTER SCALE** lettering on both sides of the scale, it was a big display of the company participating in our local event. The big float was pulled by #46 semi-tractor with Dave behind the wheel. *Photos provided by Faith and Elaine*



Tim and Ana had the important job of organizing candy for the float, all to be tossed out during the parade.



Above: Megan, Kally, Tiann and Faith
Below: Chase, Cade, Wyatt, Cole, Trace & Huck



Tommy participated in the burnout contest.



Donald rode on the float with his two oldest children, Eriqua and Hunter.

A big THANK YOU
to everyone involved
who represented
Webster Scale during
Pumpkin Fest!



Notices / Reminders



Webster Scale participated again this year in the Lake Area Technical College Career Day event held in October. Rob Kading photo



Jasmine shared this photo of some unwelcome guests she found in her loader one morning recently. Dave has provided sticky traps for the trucks and equipment, as mice are looking for warmth as the weather turns colder.

WINTER WORK

Truck Drivers / Equipment Operators

You are asked to keep a written list of any repairs and issues the mechanics should know about as they prepare for their winter work in the off-season.

This would be a big help to our mechanics who need to prioritize the work to be done. They do not have time to go through every piece of equipment and every truck looking for problems.



EUGENE STAHNKE

Air Force 1976-1980

TERRY NORGAARD

US Marine Corp 1978-1981

SHAWN ELLINGSON

MN Army National Guard
1989-1995 Infantry

JONATHON FISH

Army Reserve 2010-2019

JARED STORMS

Army & now National Guard
(Loader on the Abrams tank)

Gone but not forgotten...

JOHN SHOEMAKER

**Webster Scale Vice President
Construction Division**

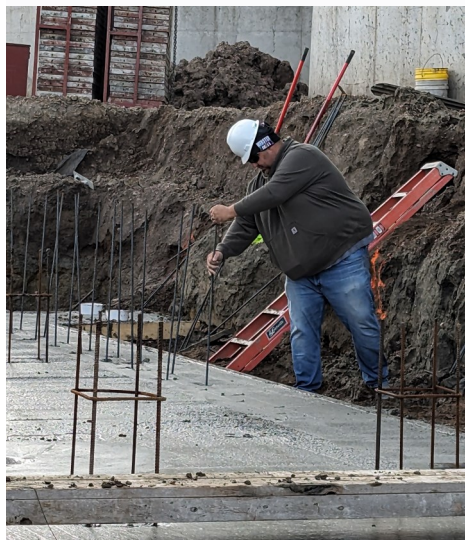
Dec. 21, 1970 - Nov. 2, 2018



Jamie Sturdevant, Scale Technician

The scale crew is shown during the process of preparing the foundation for a 120' x 12' WSI pit scale (the one being completed in Shop 2). The scale installation begins the first part of November.

#2319



Rob placing rebar supports



Installing drain tile around the base of the scale before backfilling



Chris is running the remote controls on the wacker packer to pack the backfill around the scale. He does this after each foot of backfill is added, and there are about seven feet of backfill for a pit scale. The compaction is tested several times during this process by an outside testing service.



Trent prepares a thermal printer for Onida following directions drawn by Tannor. This is a printer that uses thermal paper and requires no ink!



Joey from the scale team participated with his son Jackson in the 'Touch-A-Truck' event during Pumpkin Fest. This was an opportunity for young and old alike to get up close to some big equipment.

On a recent day, Stacey was alone in Shop 1 working under Semi #30. He was installing a new piston to replace one that had a hole in it. Stacey also had to replace the ejector. It had gone out when Bob was driving at the time and it caused a lot of smoke. Stacey says this truck should be back on the road in early November.

Shop 1

Scale truck #38 came to the shop for an issue with the TPS, which is the throttle positioning fuel control to the computer, and #42 had repairs to the 'the heart' - oil pump, engine oil pan gasket and air bag.

Jason was called to New Effington to work on the CAT 336 excavator that wasn't running, and also to Ellendale to deal with a motor grader and do some oil changes. The other two mechanics are currently working off-site as well. Logan is on Tim's project in McCook County, and Jonathon is in the Presho area where the trucks are hauling.



Construction Division

Tim Woods, Project Manager

We have finished two sets of turning lanes for I-29 south of Freeman on Highway 81, and are currently working on a third set of turning lanes off of Highway 42 east of Freeman. Our work on this one should be done the first week in November, and then BPI will follow with the paving. We have been dealing with a lot of rain that has put us behind, so we will not be able to finish the fourth and final set of turning lanes this year.

Crew members working with me on this project are Logan, Tommy, Jake, Cade and Lucas. Logan, our on-site mechanic, has also been running equipment as well. Jake and Cade are running the dozers and Tommy is usually in a scraper, but has also driven a water truck and a roller. Lucas is also one to run about any of the equipment as needed. We have our flaggers on the project as well—Jessica, Harley and Ana, along with Carlos driving the pilot car.

After we finish for this year here, we will go back to the data mine site project near Ellendale, ND to join Faith and her crew to clear and strip a 40-acre field area for another building site.

#2304

**SD-DOT
McCook Co.**

**Hwy 81 & 42
Turning Lanes**



Donald Fellbaum, Project Manager

Our crew (Dawson, Eric, Lana, Zach & myself) is currently still on Job 2302, a DOT project involving two box culverts as first reported in the October newsletter. We have the triple barrel box set and 90% backfilled. The double barrel box is set and backfilled. We need to finish backfilling the triple barrel and put a foot of recycled base coarse on top and pave it. JD and Joey U. (Shop 2) came and helped us when we were installing boxes.

When we were backfilling the double barrel box, Rob and Joey O. (Scales) came and poured flowable fill in the triple barrel box and that really helped us out. When we get traffic switched back to the highway, we will need to remove the traffic diversions.

At right, Lana is wearing waders in the water, as we were dealing with quite a bit of water when installing the double barrel box.

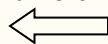
Photos provided by Donald and Roger

#2302

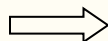
**SD-DOT
Roberts County
Box Culverts**



**Double Barrell
Culvert Box**



**Triple Barrell
Culvert Box**



Faith Shoemaker, Project Coordinator

We are working on an additional data mining site in Ellendale. Here we are placing rock on the road to get us through the slough in the corn field. Elizabeth, Kelly and James are working here with me.

In this photo, I am loading a haul truck with clay and Elizabeth is driving the truck. We have been working on stripping the site and placing fill material. This site will have of a new administrative building in the middle.



Shop 2



Another project completed recently in this shop was widening the quick attach brackets so that the rock bucket will fit the new excavators.

All of these parts have exact measurements. The drafting department (Ken and Tannor) provide drawings for each different piece with the exact measurements for cutting.

Drawings from the drafting department

Note to young people....

Math on the job: Here is a good example of why math is important, in particular here, geometry skills using measurements and being able to read and understand geometric drawings.



This last scale section for Glacial Lakes Energy has been painted and all six sections for a 120' x 12' pit scale are on the way to Huron to be installed.

Once the construction season is over, equipment needing repairs will be coming in. So before that happens, JD said they have been busy making scale parts to have on hand for when the next scale order comes in.

Temporary worker Terry has been helping out with machining some of these parts. He is using a band saw designed to cut steel.

Machining Parts

JD measuring before Terry makes a cut



Shop 3

This shop is seeing some activity now as water trucks are being winterized. All of the water must be drained out and anti-freeze added.

There will continue to be increased activity here as construction season winds down and equipment comes back to Webster.





Webster Scale, Inc.
PO Box 127
14012 SD Highway 25
Webster, SD 57274

- Family owned business since mid 1960's
- Full line of scale products, services and parts
- Wide variety of heavy construction services
- Committed to providing superior products and services at a reasonable cost



Drowsy driving is the dangerous combination of driving when sleepy. This usually happens when a driver has not slept enough, but it can also happen because of untreated sleep disorders or shift work.



Prescription and over-the-counter medications can also cause drowsiness, and alcohol can interact with sleepiness to increase both impairment and drowsiness.

No one knows the exact moment when sleep will cover their body. Falling asleep at the wheel is clearly dangerous, but being sleepy also affects your ability to drive safely, even if you don't fall asleep.

Drowsiness: Makes you less able to pay attention to the road. Slows your reaction time if you must brake or steer suddenly. Affects your ability to make good decisions.

Sleep First. Drive Alert.

Warning signs of drowsy driving

- Yawning or blinking frequently
- Trouble remembering the past few miles driven.
- Missing your exit.
- Drifting from your lane.
- Hitting a rumble strip on the side of the road

If you have any of these warning signs, pull over to rest or let someone else drive. Simply turning up the radio or opening the window are not effective ways to keep you alert.

Prevent drowsy driving before taking the wheel.

- Get enough sleep! Most adults need at least 7 hours of sleep a day, and teens need at least 8 hours.
- Develop good sleeping habits, such as sticking to a sleep schedule.
- If you have a sleep disorder or have symptoms of a sleep disorder, such as snoring or feeling sleepy during the day, talk to your doctor for treatment options.
- Before you drive, avoid drinking alcohol. Alcohol impairs the skills needed for driving and increases drowsiness.