

WEBSTER SCALE QUARTERLY NEWSLETTER



Webster Scale took part in the Lighted Parade hosted by the Webster Chamber for Pumpkin Fest 2024. Jasmine and Tim had the pleasure to load up all of the pumpkins.



SEVERAL
DRIVEWAYS

69
CROSSOVERS

90 MILES



Our Construction Crew Completed Milling Work From Webster, SD to Bath, SD.



CONSTRUCTION
SAFETY WEEK

MAY 5 – 9 2025

- **Be Present, Be Focused**
- **Healthy Mind, Healthy Body**
- **Be Relentless**
- **Be Safe, Be Well Rested**

Thank You

Your efforts are reducing risks and accidents on our projects. Thank you for working hard and working safely.

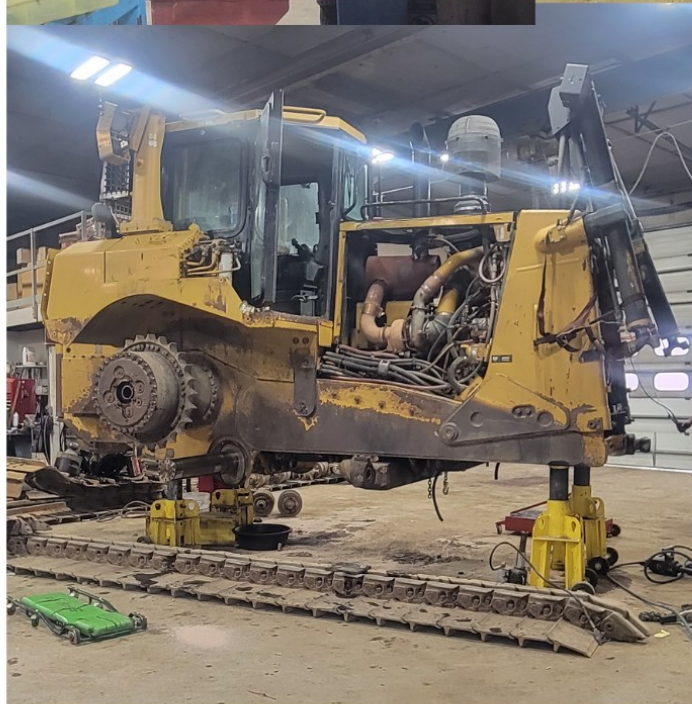
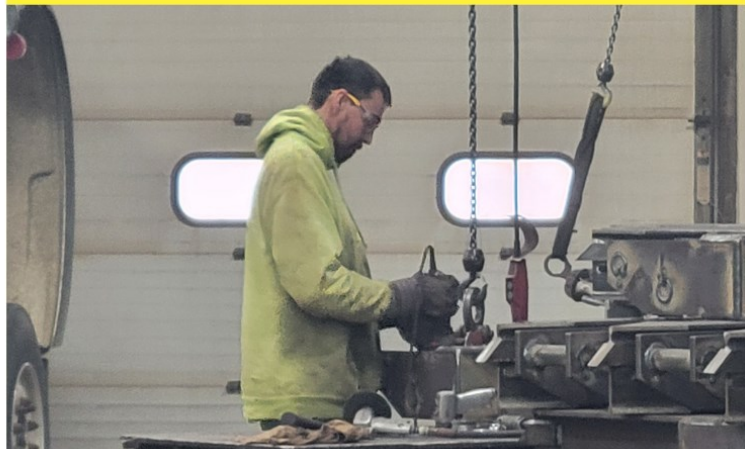
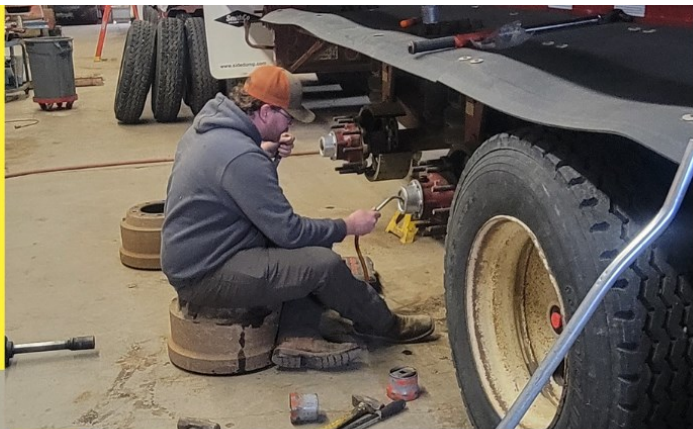
JOB OPENINGS!!

Webster Scale is currently looking for CDL Truck Drivers and Heavy Equipment Operators!

If you know of anyone looking for work who might be interested, please encourage them to apply.

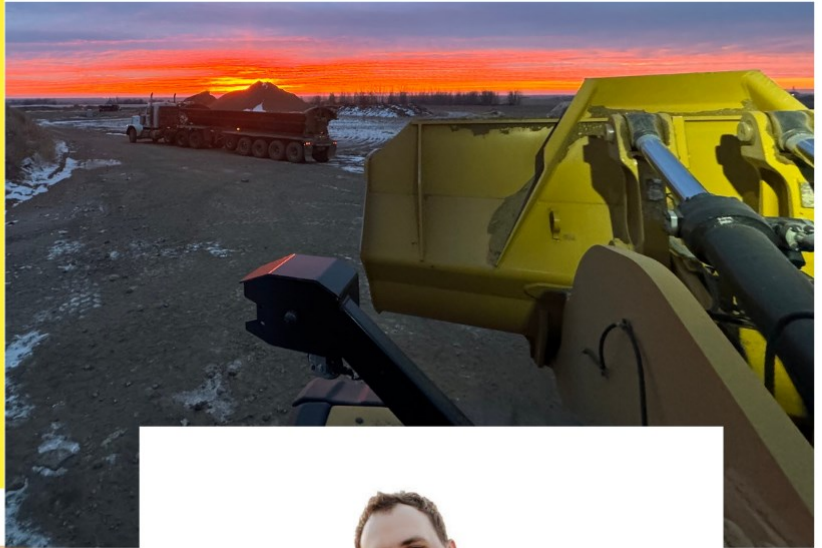
(605) 345-3881

**OUT WITH THE OLD AND
IN WITH THE NEW**
Webster Scale is Gearing up
for a New Season



WEBSTER SCALE QUARTERLY NEWSLETTER

- Family Owned Business since Mid 1960's
- Full Line of Scale Products, Services, and Parts
- Wide Variety of Heavy Construction Services
- Committed to Providing Superior Products and Services at a Reasonable Cost



Our office ladies enjoyed a night together celebrating the holidays!



Faith and Wyatt Ewing tied the knot October 26th! We wish them a long and happy marriage!

Upcoming Dates:

January

New Years Day - Jan 1st

MLK Jr. Day - Jan 20th

February

Groundhog Day - Feb 2nd

Super Bowl - Feb 9th

Valentines Day - Feb 14

March

Employee Safety Meeting

Mar 13th

St. Patty's Day - Mar 17th

JAN 16 - KELLY ZAVADIL

JAN 30 - JULIAH GOEDERT

FEB 11 - CREIG LEWIS

FEB 14 - JOEY OKROI

★ FEB 16 - JACK NEISIUS

FEB 20 - KELLI ABRAHAM

FEB 22 - DONALD FELLBAUM

FEB 24 - SHAWN ELLINGSON

Happy
Birthday!

MAR 4 - JAMES HOHN

MAR 6 - MINDY CHARLSON

MAR 15 - LOGAN DOLNEY

MAR 15 - THOMAS KNUTSON

MAR 15 - COREY LONE

MAR 22 - JONATHON FISH